

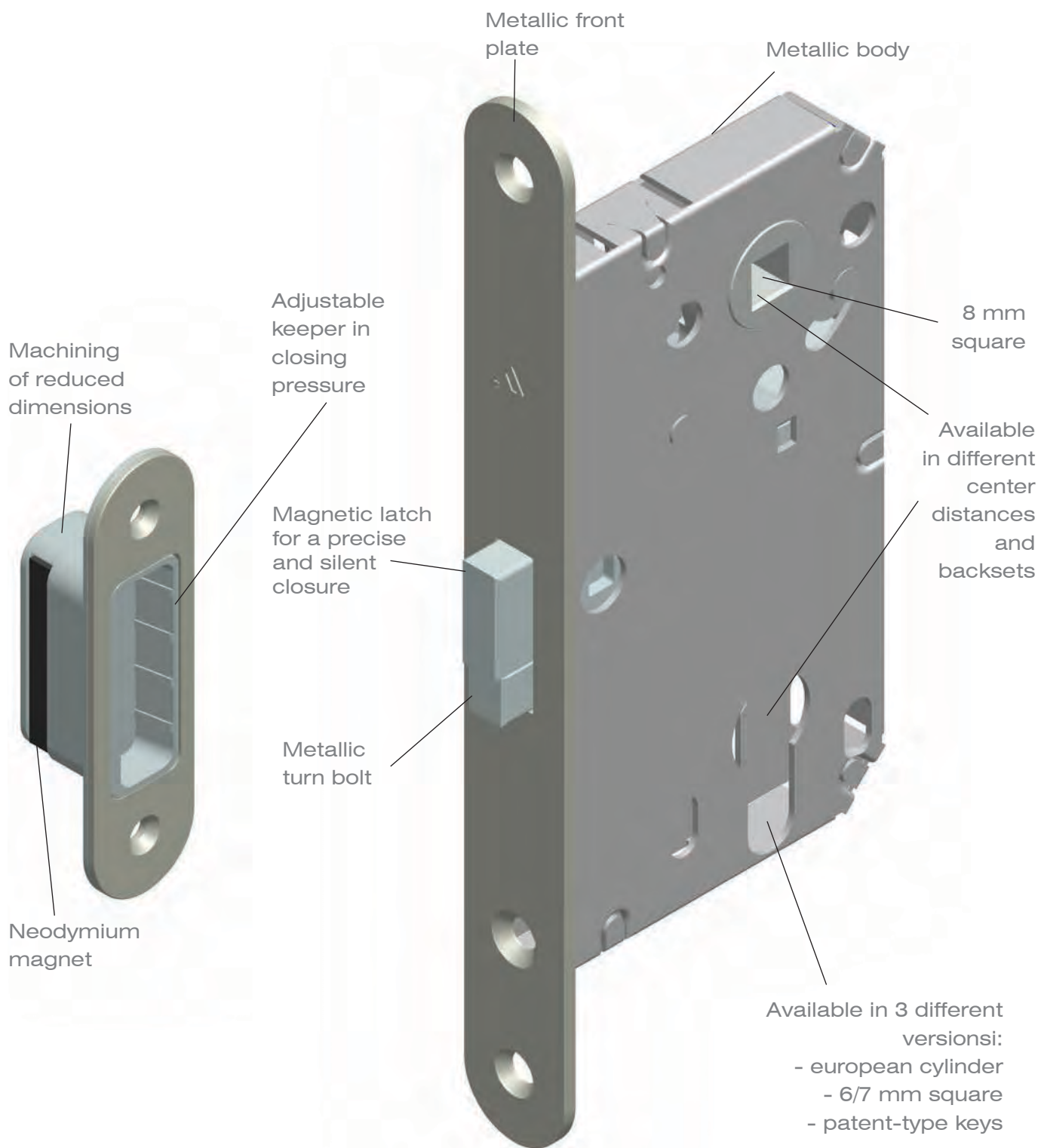
AUTO'



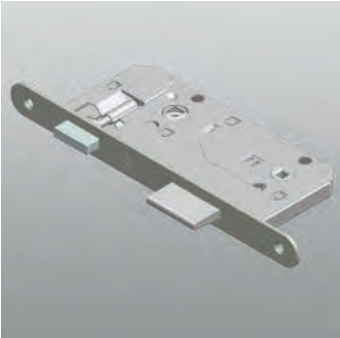

Door lock range

- Magnetic latch for a precise and silent closure
- Concealed fastenings
- Suitable to every handle, available with european cylinder or with knob of 6/7 mm square
- Long endurance thanks to the absence of friction
- Reduced size
- Suitable for timber and aluminium doors

Door lock range



AUTO' locks

	Article	Description	Pcs.	Finishes
	4230.5/24BR	AUTO' Lock with magnetic latch and metallic turn bolt, preset for european profile cylinder, body and front plate in galvanized steel. Backset of 50 mm and distance between centres of 90 mm. Front plate 22 mm x 240 mm.	50	CO, CS, OL
	Article	Description	Pcs.	Finishes
	4230.5/24BQ	AUTO' Lock with magnetic latch and metallic turn bolt, preset for knob with square of 6/7 mm, body and front plate in galvanized steel. Backset of 50 mm and distance between centres of 90 mm. Front plate 22 mm x 240 mm.	50	CO, CS, OL
	Article	Description	Pcs.	Finishes
	4231.5/20BR	AUTO' Lock with magnetic latch and central turn bolt, preset for european profile cylinder, body and front plate in galvanized steel. Backset of 50 mm and distance between centres of 85 mm. Front plate 22 mm x 196 mm.	50	CO, CS, OL
	Article	Description	Pcs.	Finishes
	4231.5/20BQ	AUTO' Lock with magnetic latch and central turn bolt, preset for knob with square of 6/7 mm, body and front plate in galvanized steel. Backset of 50 mm and distance between centres of 85 mm. Front plate 22 mm x 196 mm.	50	CO, CS, OL
	Article	Description	Pcs.	Finishes
	4232.3/19BR	AUTO' Lock with magnetic latch for aluminium doors, preset for european profile cylinder, body and front plate in galvanized steel. Backset of 30 mm and distance between centres of 85 mm. Front plate 22 mm x 196 mm.	50	CO, CS, OL

AUTO' locks


Article	Description	Pcs.	Finishes
4232.3/19BQ	AUTO' Lock with magnetic latch for aluminium doors, preset for knob with square of 6/7 mm, body and front plate in galvanized steel. Backset of 30 mm and distance between centres of 85 mm. Front plate 22 mm x 196 mm.	50	CO, CS, OL



Article	Description	Pcs.	Finishes
4233.6/6YCN	AUTO' Lock with magnetic latch, body and front plate in galvanized steel. Backset of 60 mm. Front plate height of 60 mm.	50	CO, CS, OL



Article	Description	Pcs.	Finishes
4233.6/6YCS	AUTO' Lock with magnetic latch, body and front plate in galvanized steel. Backset of 60 mm. Front plate height of 60 mm, centre distance block of 17.5 mm.	50	CO, CS, OL

Accessories for AUTO' locks

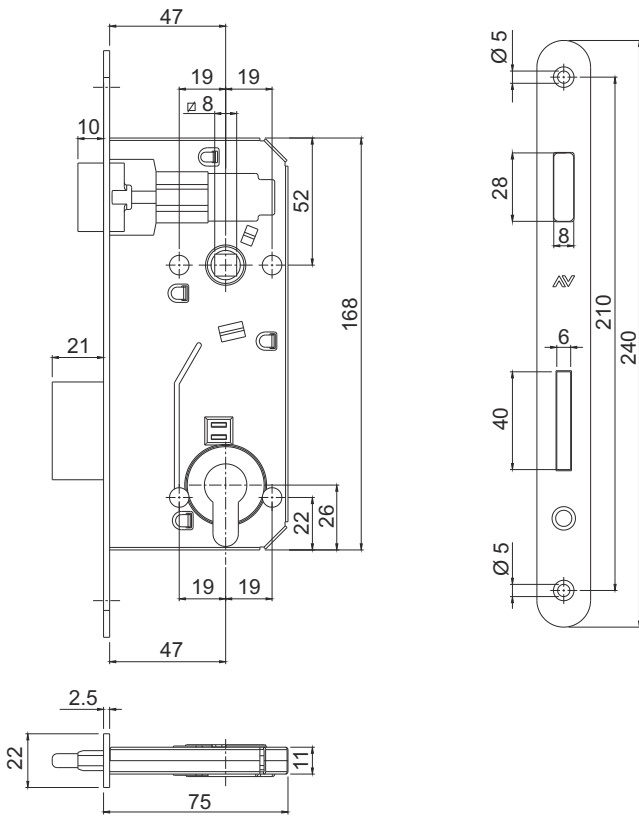
	Article	Description	Pcs.	Finishes
	4230.700	Kit including galvanized steel counterplate and nylon magnetic pocket. To use with locks art. 4230.	50	CO, CS, OL
	Article	Description	Pcs.	Finishes
	4230.720	Nylon pocket for bolt. To use with the counterplate art. 4230.700.	50	.79
	Article	Description	Pcs.	Finishes
	4231.700	Kit including galvanized steel counterplate and nylon internal pocket. To use with locks art. 4231.	50	CO, CS, OL
	Article	Description	Pcs.	Finishes
	4232.800	Kit including galvanized steel counterplate and nylon internal magnetic pocket. To use with locks art. 4232.	50	CO, CS, OL

Legend of finishes

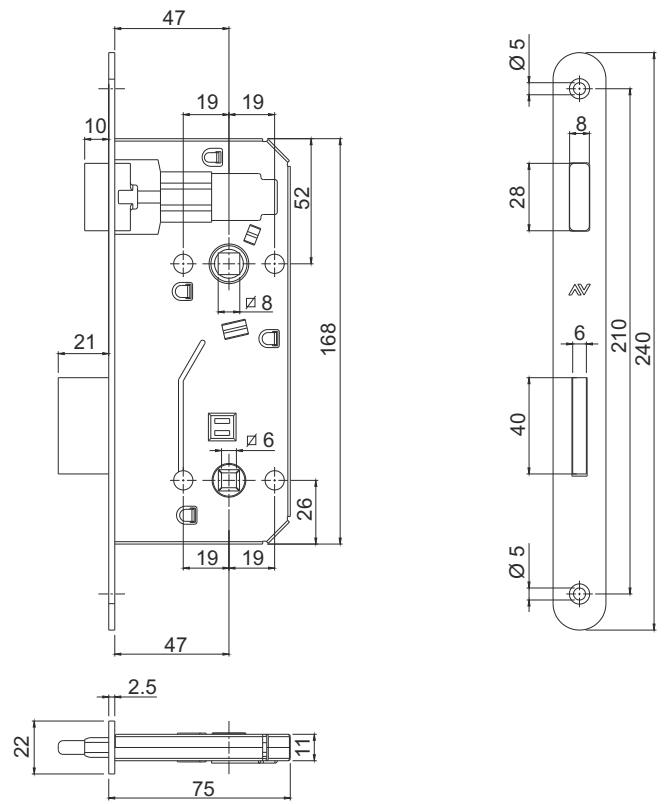
Code	Decription
.79	light grey (RAL 7001)
CO	matt chrome
CS	satin chrome
OL	bright brass coated

AUTO' locks and accessories

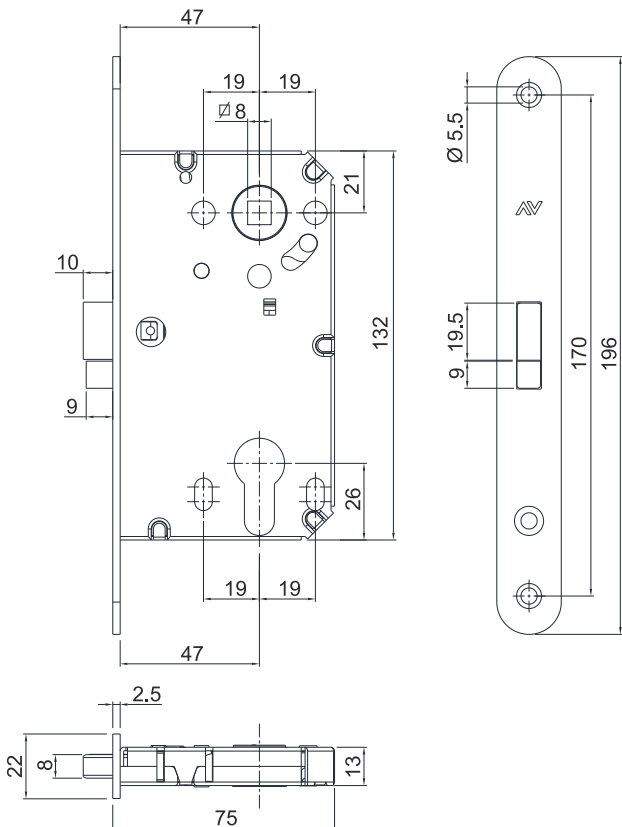
4230.5/24 BR



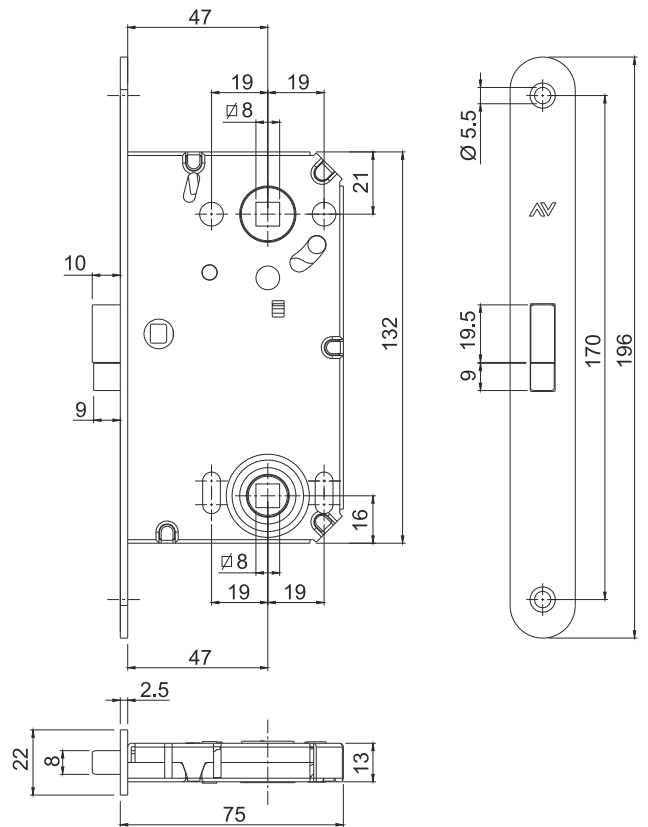
4230.5/24 BQ



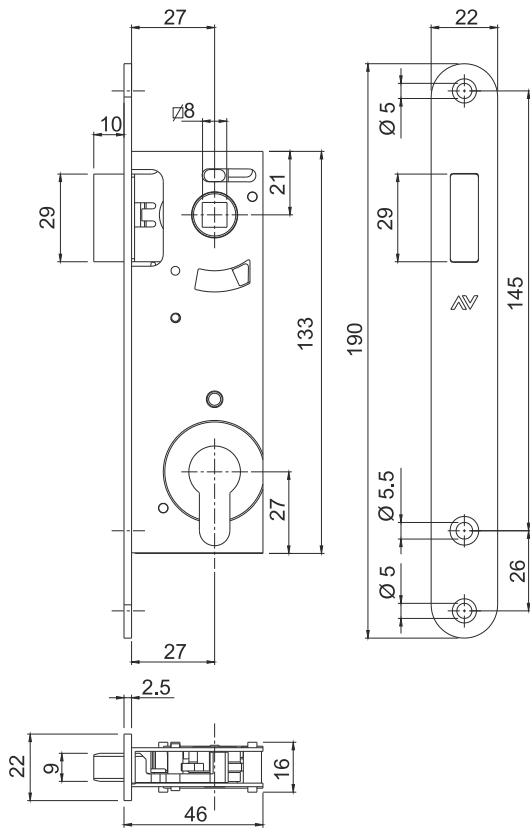
4231.5/20 BR



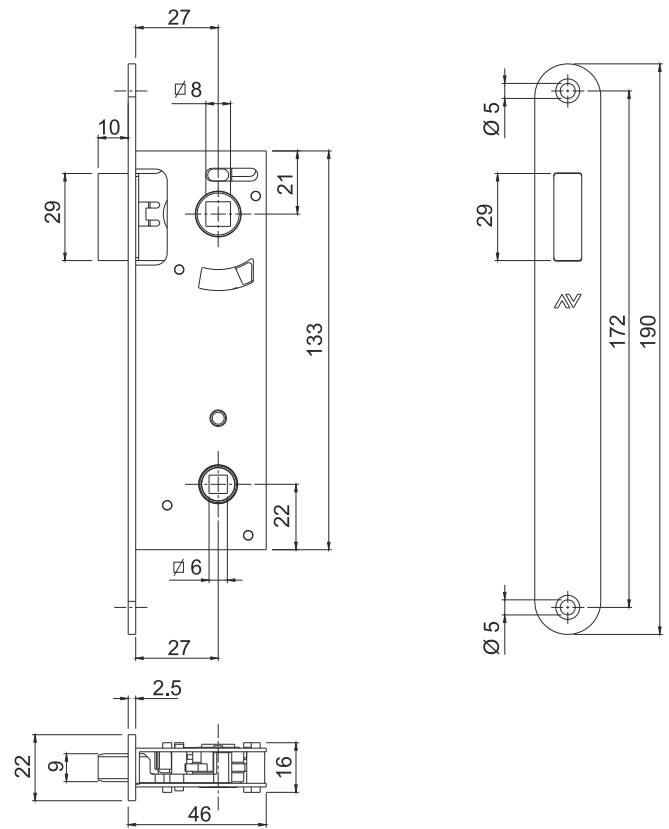
4231.5/20 BQ



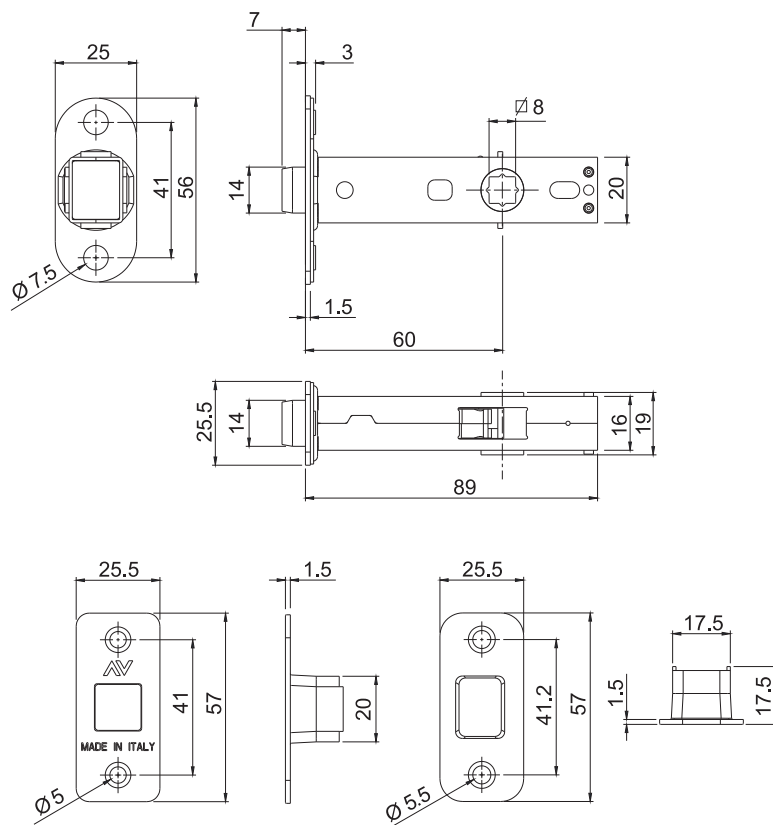
4232.3/19 BR



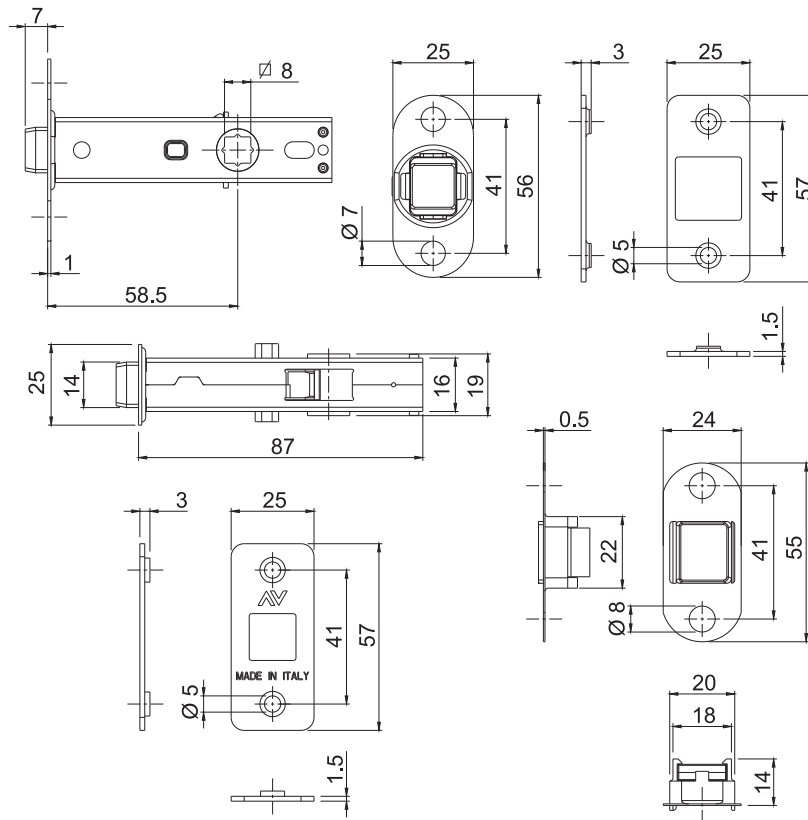
4232.3/19 BQ



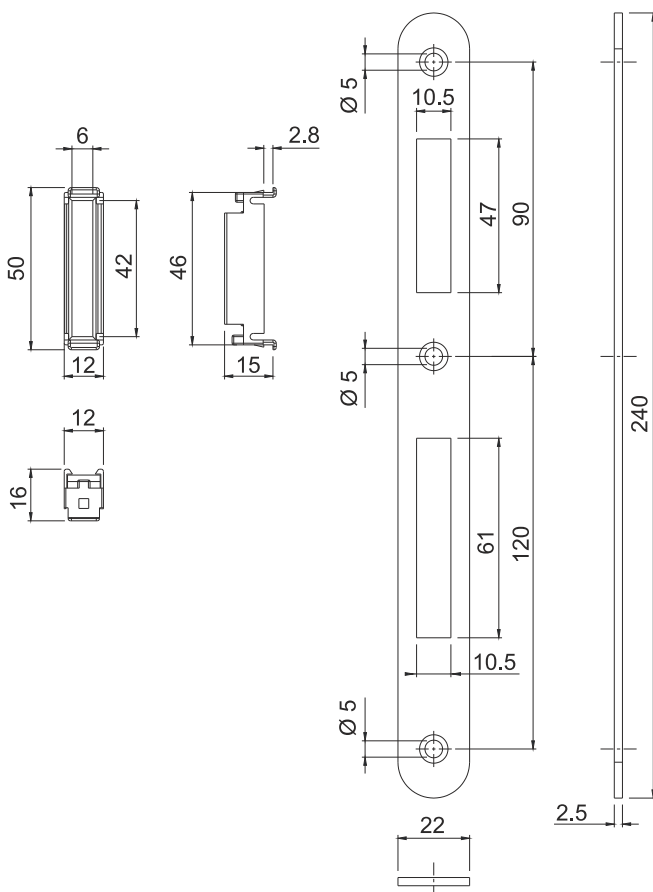
4233_6/6 YCN



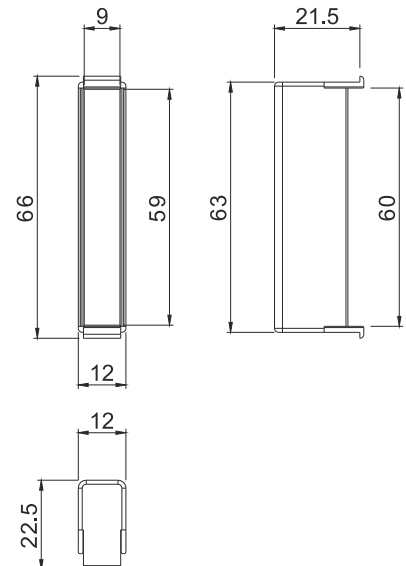
4233_6/6 YCS



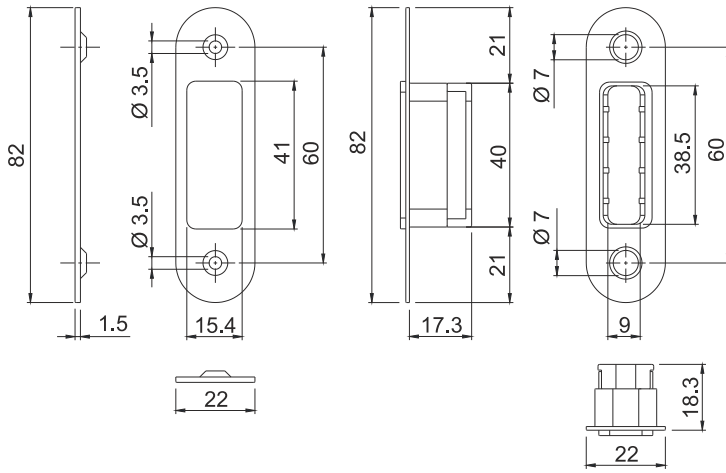
4230.700



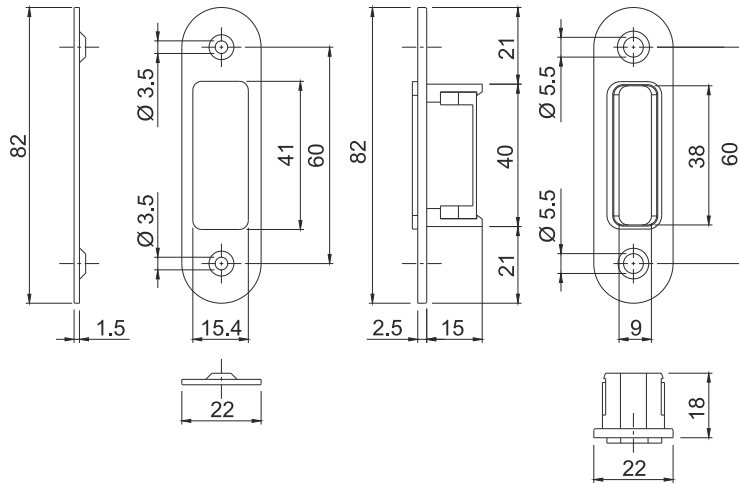
4230.720



4231.700



4232.800





Savio S.p.A.
Via Torino, 25 (S.S. 25) - 10050 Chiusa S. Michele (TO)
Tel. +39 011 964 34 64 - Fax +39 011 964 34 74
www.savio.it - export@savio.it

